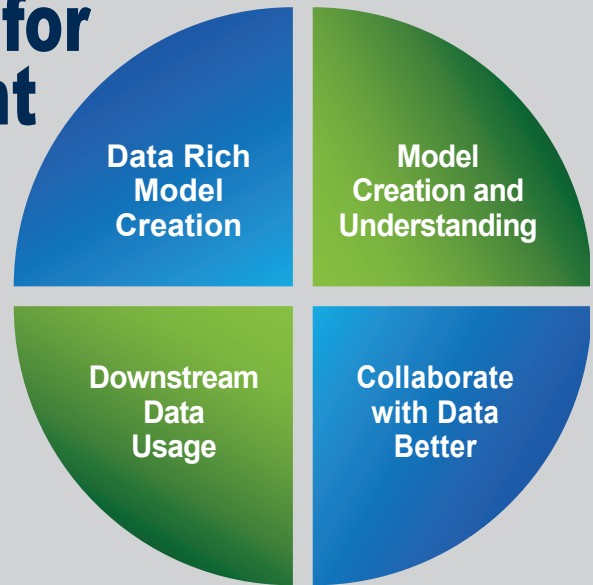


# Revit® Fundamentals for Facilities Management

**Objective:** This course focuses on using Revit software for facilities management, teaching participants to build, document, and manage models and sites. It covers creating detailed plans, schedules, and legends, customizing asset data, and extracting data for use. Additionally, students will learn to import/export data, manipulate content, and collaborate using Autodesk Construction Cloud.



**Course Length:** 5 days

## Day 1

Introduction to the Revit interface, view navigation, working with families, basic sketching and modifying tools, and an introduction to structural elements

## Day 2

Learn about the creation of walls, floors, ceilings, roofs, doors, and windows.

## Day 3

Gain proficiency in creating construction documents, including annotations, tags, schedules, details, and site tools.

## Day 4

Learn to use tools including creating spaces, zones, area plans, color fill legends, advanced schedules, and data import/export.

## Day 5

Learn to control model visibility, collaborate with other users, identify and resolve clashes, and gain an introduction to HVAC system concepts

- Lunch is included when training at our facility.
- Class is from 8:30 a.m. to 4:30 p.m.
- Students will receive a certificate upon completion.
- After completion of an entire class, students may audit the same class for one year, if space is available in the class.
- Attend the class in person at our training center in Atlanta or virtually from anywhere in the world via the internet

### Advantages to Training at Repro Products' Autodesk® Authorized Training Center:

- Learn from our Autodesk Certified instructors at our superior facilities.
- Receive Autodesk® recommended content from Autodesk® Official Training Guides.
- Get your hands on sample projects and exercises that emphasize real-world application.

**Prerequisites:** General knowledge of the AEC/FM industry, construction process and BIM process is recommended. Prior Revit knowledge is helpful but not required. Requires access to Revit 2022 or newer with Revit 2023 or newer recommended.

**Call 678-640-9965 to schedule your training.**

email [escott@reproproducts.com](mailto:escott@reproproducts.com)  
[www.rpipublicsector.com](http://www.rpipublicsector.com)